

## allPIXA evo 8k Color Line Scan Camera

High-speed CMOS camera with multi-line color sensor and TDI options

GEN<i>CAM

10 GIGE™  
VISION



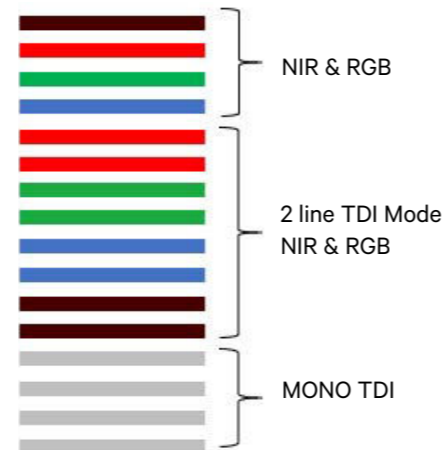
The allPIXA evo 8K offers CMOS performance with CCD image quality. The novel multi-line CMOS sensor features TDI options for color and mono at high speed. Line rates up to 90 kHz in full color are possible with the fast and cost-efficient Dual 10 GigE interface. With line and frame trigger options, variable encoder input and color conversion possibilities the allPIXA evo 8K is the best choice for all high-speed and high-resolution web and print inspection applications. Filters in the near infrared range enables the recognition of object features in the visible and NIR spectrum with one camera. For easy integration an intuitive graphical tool and a SDK for camera control and high-speed image capture for Windows and Linux are provided.

### Camera overview

- ▶ allPIXA evo 8K color line scan camera with standard Single/Dual 10 GigE interface
- ▶ TDI options for RGB and mono
- ▶ High speed: up to 3 x 90 kHz line frequency (RGB)
- ▶ Optical connectors (SFP+) for long fibre cables up to 300 m
- ▶ Economical system cost by using cost effective network interface cards for 10 GigE

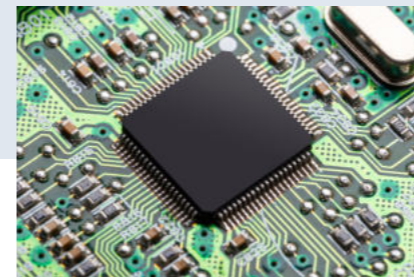
### Features

- ▶ CMOS color sensor with 16 lines
- ▶ Full RGB color with 2 x TDI in full speed
- ▶ Mono camera with up to 8 x TDI in full speed
- ▶ NIR pass filter provides additional NIR image
- ▶ Continuous white balancing
- ▶ Precise multi-camera synchronization
- ▶ Chromasens SDK for high-speed image capture
- ▶ Multi-Flash function for multiple image acquisition in one pass



### Applications

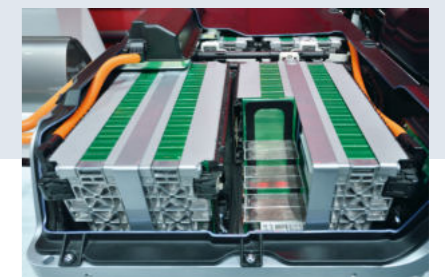
- ▶ High-speed print inspection
- ▶ PCB & AOI
- ▶ Wafer inspection
- ▶ Sorting processes
- ▶ High-resolution surface inspection
- ▶ Food
- ▶ Semiconductor
- ▶ EV Battery



PCB Inspection

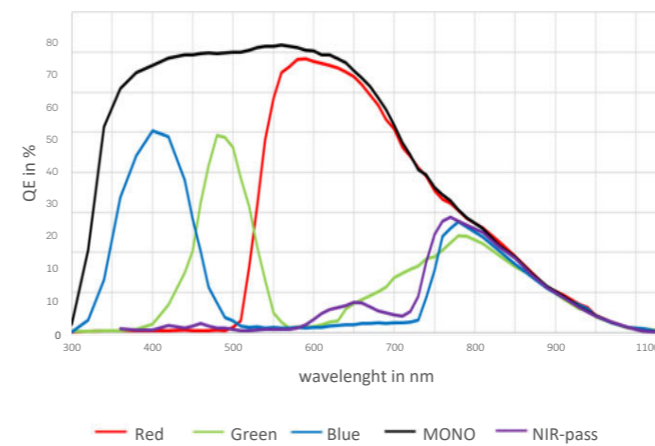


Print



Battery Inspection

### Spectral sensitivity sensor:



### Specifications:

Sensor	CMOS line scan sensor with 16 lines (RGB, NIR-pass and mono)
Number of pixels	8192 pixels
Active pixel size	5.0 μm x 5.0 μm x 16 lines
Output	Single/Dual 10 GigE GigE Vision® 2.0 compliant
Max. line rate color	RGB: 8192 pixels x 3: up to 50 kHz (Single)* RGB: 8192 pixels x 3: up to 90 kHz (Dual)* RGB+NIR: 8192 pixels x 4: up to 37 kHz (Single)* RGB+NIR: 8192 pixels x 4: up to 68 kHz (Dual)*
Max. line rate mono	Mono: 8192 pixels x 1: up to 100 kHz (Single and Dual)*
Max. line rate in ROI mode	RGB and mono: up to 100 kHz
Data format	3 x 8/10/12 Bit color or 1 x 8/10/12 Bit mono mode or 4 x 8/10/12 Bit RGB + NIR-pass
TDI options color camera	color: 2 x TDI / mono: 4 x TDI
TDI options mono camera	8 x TDI
Interfaces	2 x SFP+ (copper and fiber connectors) External I/O (DSUB) / USB2.0 (Micro USB)
Certifications	CE; FCC compliant; RoHS
Power supply	12 - 24V DC ± 20%
Trigger mode	Free run / External trigger Line trigger / Encoder / Frame trigger
Operating Temperature	0° - 60°C (housing temperature)
Dimensions / Lens mount	102 x 76 x 82 mm (W x H x D) / M72 x 0.75 mm / F-Mount

\*With Chromasens SDK. For more information see allPIXA evo manual.

### Customized Cameras and Imaging Systems

Chromasens offers fully customized light, camera and scanner solutions. All systems are 100% adaptable to customer requirements.