



# allPIXA *evo*

HIGH-END LINE SCAN CAMERA SERIES



HIGH-SPEED  
HIGH RESOLUTION  
FEATURE RICH



8k



# allPIXA evo 8k

Line Scan Camera with 10GigE / CoaXPress Interface

CMOS Performance with CCD Image Quality



Our allPIXA evo line scan camera series offers high-performance with CMOS sensors in CCD image quality. The novel multi-line CMOS sensor features TDI options for Color and Mono at high-speed to increase the image quality. Line rates up to 100 kHz in Color are possible with the fast and cost-efficient Dual 10GigE and 4x CoaXPress interfaces. With line and frame trigger options, variable encoder input and color conversion possibilities, this line scan camera is the best choice for all high-speed web and print inspection applications demanding high resolution. Filters in the near infrared range enable the recognition of object features in the visible and NIR spectrum. For easy integration, allPIXA evo cameras come with an intuitive graphical tool and an SDK for camera control and image capture for Windows and Linux. Chromasens' SDK with real time kernel for Windows ensures completely reliable image data transfer, even for high data rates.

#### CAMERA OVERVIEW:

- ▶ CMOS quadlinear sensor with 8,192 pixels
- ▶ Standard single/dual 10GigE interface (DXGE)
- ▶ 4x CoaXPress (CXP-12) interface with PoCXP
- ▶ True Color with excellent signal-to-noise-ratio
- ▶ Configurable RGB, RGB+NIR or Mono output
- ▶ TDI options for RGB and Mono
- ▶ High speed: up to 100 kHz line frequency with full RGB and RGB+NIR
- ▶ SDK and graphical tool GCT for Windows and Linux
- ▶ SDK with real time kernel to ensure reliable data transfer under Windows



#### FEATURES:

- ▶ Color with 2x TDI in full speed
- ▶ Mono with 4x TDI in full speed
- ▶ NIR pass filter provides additional NIR image
- ▶ Continuous white balancing
- ▶ Precise multi-camera synchronization
- ▶ Chromasens SDK with real time kernel for reliable high-speed image capture under Windows
- ▶ Multi-flash function for capturing multiple images in one pass with various lighting conditions

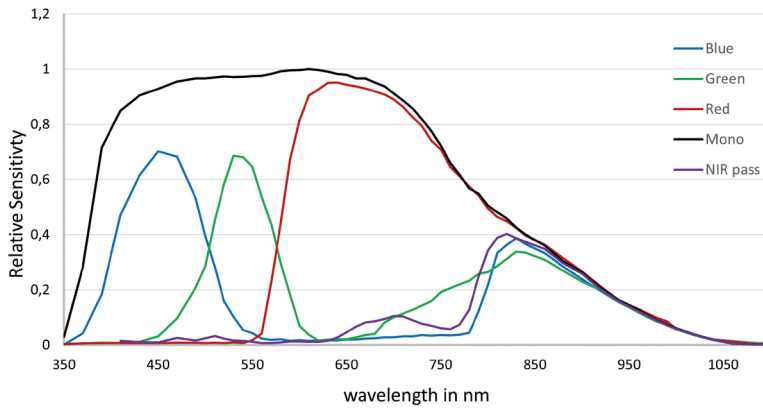
#### TYPICAL APPLICATIONS:

- High speed web inspection
- Sorting processes
- Logistics
- Food inspection
- Pharma
- Semiconductor
- Electronics / PCB / AOI
- Battery inspection
- High-speed print & packaging inspection
- High quality surface inspection
- Wood inspection
- General machine vision

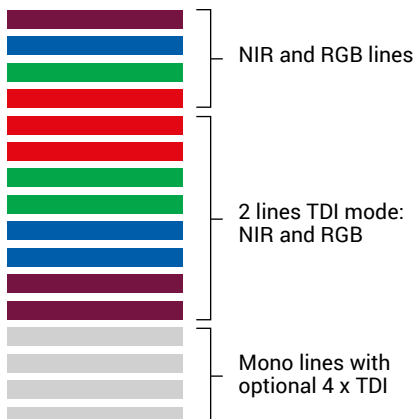
## SPECIFICATIONS:

	allPIXA evo 8k	
Interface		
Sensor	CMOS	CMOS
Number of pixels	8,192	
Active pixel size	5.0 µm x 5.0 µm	
Interface connector	RJ45 (10GBASE-T)	4x CoaXPress (CXP-12)
Max. line rate Mono	up to 100 kHz (Single and Dual)	up to 100 kHz
Max. line rate 4x Mono TDI	up to 100 kHz (Single and Dual)	up to 100 kHz
Max. line rate RGB	up to 47,9 kHz (Single) / up to 90 kHz (Dual)	up to 100 kHz
Max. line rate 2x RGB TDI	up to 47,9 kHz (Single) / up to 90 kHz (Dual)	up to 100 kHz
Max. line rate RGB+NIR	up to 37 kHz (Single) / up to 68 kHz (Dual)	up to 100 kHz
Power over Ethernet/CXP	PoE	PoCXP
Data format	1 x 8/10/12 Bit mono mode / 3 x 8/10/12 Bit color or / 4 x 8/10/12 Bit color+NIR	
Power supply	12-24 V DC ± 10%	
Trigger mode	Free run, external trigger, line trigger, frame trigger or encoder	
Operating temperature	0° to 60° housing temperature	
Dimensions	102 x 76 x 82 mm (W x H x D)	102 x 76 x 87 mm (W x H x D)
Lens mount	M72 x 0,75 mm / F-Mount (adapter for M72)	
Weight	900 g	
Certifications	CE; RoHS	

## SPECTRAL SENSITIVITY (MONO AND RGB+NIR)

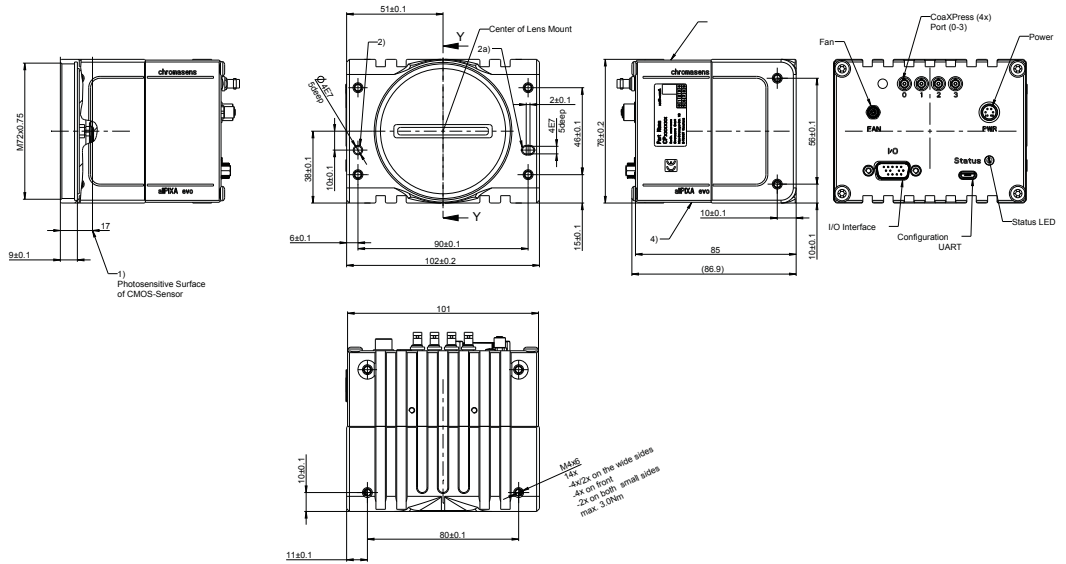


## SENSOR LINES

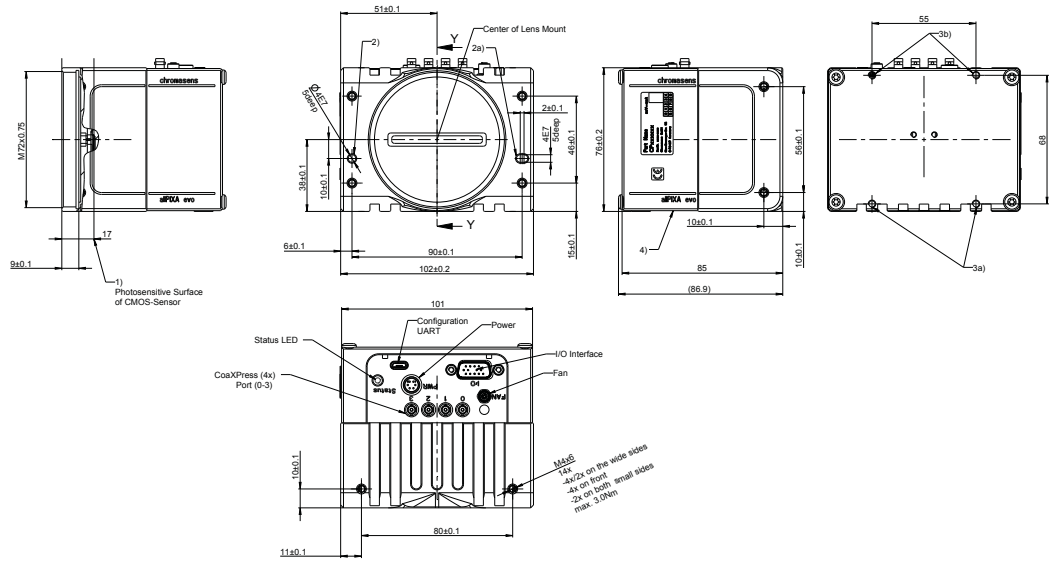


# DRAWINGS

## allPIXA evo 8k Z CoaXPress (CXP)



## allPIXA evo 8k Y CoaXPress (CXP)



## allPIXA evo 8k Dual 10GigE (DXGE)

